

YUE QING HEYI ELECTRICAL CO.,LTD

ADD:ShangYanHou Village,LiuShi Town,YueQing City,ZheJiang,CHINA

TEL:86-577-62659558

FAX:86-577-62659558

contact :Mrs Bethy

E-mail:heyi@heyielectrical.com

Web:www.heyiele.com



KCT Series



KCT range of split core current transformers have been specifically designed to be mini size which implement the installation of small space, clamp-on design could be easily fit around cables without breaking the circuit. An internal precision resistor across the secondary winding of the CT provides a low safe voltage output.

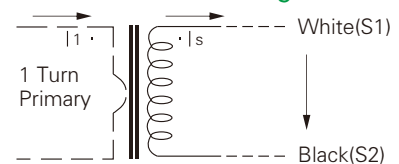
Features

- The structure of the self-locking, safe, easy to install, portable
- Wide inner window, allowing clamping of big cables or bus-bars
- Wide range of sizes to accommodate all the existing installations
- Isolated plastic case recognized according to UL94-V0
- Wires plugs, Audio plugs, Power plugs and so on five kinds of plugs

Applications

- Current measurement, monitoring and protection for electrical wiring and equipment.
- Current and power measurement for electric motors, lighting, air compressor, heating and ventilation system, air-condition equipment and automation-control system.
- Current, power and energy monitoring device.
- Relay protection device.

Circuit connection diagram



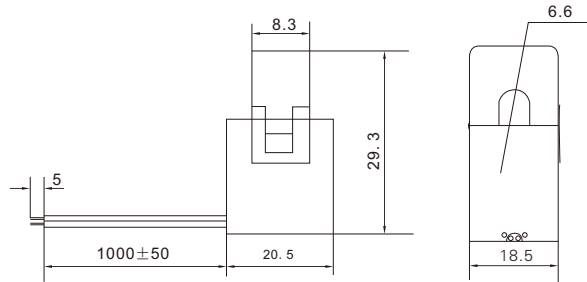
Technique Index

Electrical Parameter	
Frequency	50-2KHz
Rated Input	5A-630A
Measuring range	10%In-120%In
Rated Output	0.333V(AC)or 0-500mA
Ratio	≤ ± 1.0%
Phase angle	≤ ± 60min
Dielectric strength	2.5KV/1mA/1min
Insulation Resistance	DC500V/100MΩ min

Electrical Parameter	
Case	PA / UL94-V0
Bobbin	PBT
Core	Silicon steel
Internal structure	Epoxy
Construction	Tie
Operating Temp	-25°C~75°C
Operating Humidity	≤85%
Output Connection	UI1015 20AWG Wire(twinsted wire)2.5m

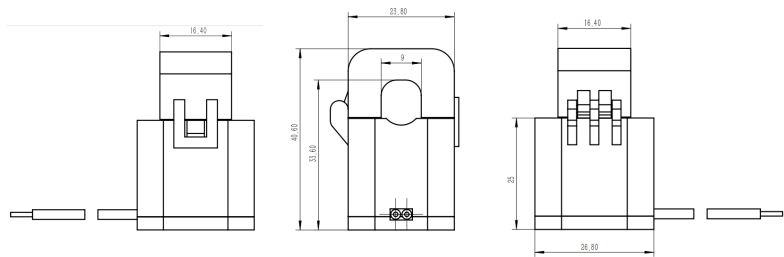
KCT Series

KCT-6



MODEL	KCT-6		
Current Ratio	5A/2.5mA	10A/5mA	20A/10mA
Primary Current(A)	5A	10A	20A
Max. Current(A)	30A	30A	30A
Output	2.5mA	5mA	10mA
Load Resistance(Ω)	200Ω	100Ω	50Ω
Class	0.5/1.0	0.5/1.0	0.5/1.0
Turns Ratio	2000:1	2000:1	2000:1
Protection Level	7.5V0-P	7.5V0-P	7.5V0-P
Insulation Category	CAT III		
Operating Condition	-20°C ~ +50°C, ≤85%RH, No condensation, IN-house&Any direction installable		
Storage Condition	-30°C ~ +50°C, ≤85%RH, No condensation		

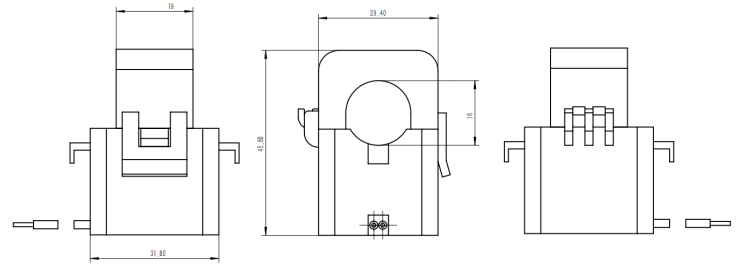
KCT-10



MODEL	KCT-10				
Current Ratio	5A/2.5mA	20A/10mA	60A/20mA	75A/25mA	1~75A/0.333V
Primary Current(A)	5A	20A	50A	75A	1~75A
Max. Current(A)	60A	60A	75A	75A	1~75A
Output	2.5mA	10mA	25mA	25mA	333mV
Load Resistance(Ω)	400Ω	100Ω	50Ω	20Ω	/
Class	0.5/1.0	0.5/1.0	0.5/1.0	0.5/1.0	0.5/1.0
Turns Ratio	2000:1	2000:1	3000:1	3000:1	/
Protection Level	7.5V0-P	7.5V0-P	7.5V0-P	7.5V0-P	
Insulation Category	CAT III				
Operating Condition	-20°C ~ +50°C, ≤85%RH, No condensation, IN-house&Any direction installable				
Storage Condition	-30°C ~ +50°C, ≤85%RH, No condensation				

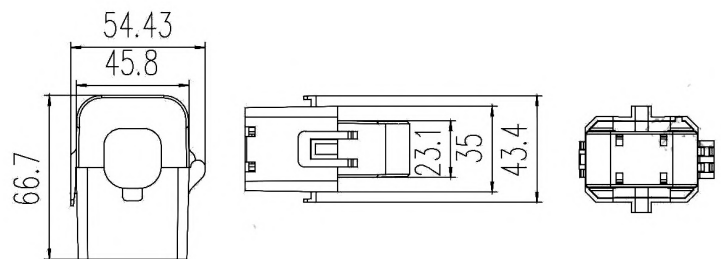
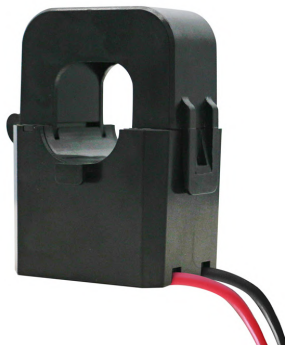
KCT Series

KCT-16



MODEL	KCT-16				
Current Ratio	100A/33.3mA	100A/40mA	120A/40mA	200A/66.7mA	100~200A/0.333V
Primary Current(A)	100A	100A	120A	200A	100~200A
Max. Current(A)	120A	120A	120A	240A	/
Output	33.3mA	40mA	40mA	66.7mA	333mV
Load Resistance(Ω)	50Ω	50Ω	50Ω	50Ω	/
Class	0.5/1.0	0.5/1.0	0.5/1.0	0.5/1.0	0.5/1.0
Turns Ratio	3000:1	2500:1	3000:1	3000:1	/
Protection Level	7.5V0-P	7.5V0-P	7.5V0-P	7.5V0-P	
Insulation Category	CAT III				
Operating Condition	-20°C ~ +50°C, ≤85%RH, No condensation, IN-house&Any direction installable				
Storage Condition	-30°C ~ +50°C, ≤85%RH, No condensation				

KCT-24

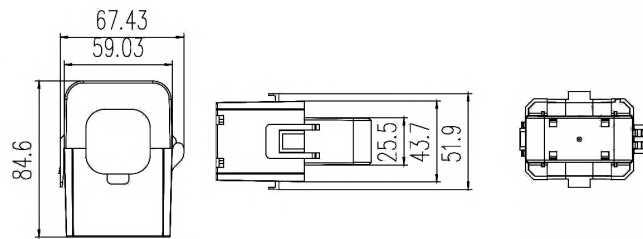


MODEL	KCT-24				
Current Ratio	100A/40mA	200A/40mA	200A/66.7mA	400A/80mA	100~400A/0.333V
Primary Current(A)	100A	200A	200A	400A	100~400A
Max. Current(A)	150A	240A	240A	480A	480A
Output	40mA	40mA	66.7mA	80mA	333mV
Load Resistance(Ω)	50Ω	50Ω	50Ω	50Ω	/
Class	0.5/1.0	0.5/1.0	0.5/1.0	0.5/1.0	0.5/1.0
Turns Ratio	2500:1	5000:1	3000:1	5000:1	/
Protection Level	7.5V0-P	7.5V0-P	7.5V0-P	7.5V0-P	
Insulation Category	CAT III				
Operating Condition	-20°C ~ +50°C, ≤85%RH, No condensation, IN-house&Any direction installable				
Storage Condition	-30°C ~ +50°C, ≤85%RH, No condensation				

KCT Series

MODEL	KCT-24					
Current Ratio	100/1A	150/1A	200/1A	250/5A (1A)	300/5A(1A)	400/5A(1A)
Primary Current(A)	100A	150A	200A	250A	300A	400A
Max. Current(A)	120A	180A	240A	300A	360A	480A
Output	1A	1A	1A	5A (1A)	5A (1A)	5A (1A)
Load Resistance(Ω)	1	1	1.5	0.5 (1.5)	0.5 (1.5)	1.5 (1.5)
Class	3.0	1.0	1.0	1.0 (1.0)	1.0 (1.0)	1.0 (1.0)
Turns Ratio	100:1	150:1	200:1	50:1 (250:1)	60:1 (300:1)	80:1(400:1)
Protection Level	7.5V0-P					
Insulation Category	CAT III					
Operating Condition	-20°C ~ +50°C, ≤85% RH, No condensation, IN-house&Any direction installable					
Storage Condition	-30°C ~ +50°C, ≤85% RH, No condensation					

KCT-36

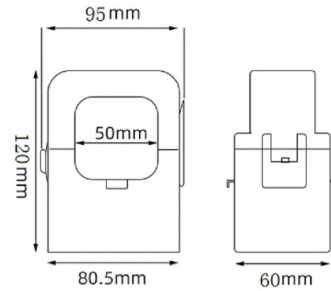


MODEL	KCT-36				
Current Ratio	300A/100mA	400A/40mA	500A/50mA	600A/60mA	300~600A/0.333V
Primary Current(A)	300A	400A	400A	600A	300A~600A
Max. Current(A)	360A	480A	600A	720A	720A
Secondary Current(mA)	100mA	40mA	50mA	60mA	333mV
Load Resistance(Ω)	50 Ω	50 Ω	50 Ω	50 Ω	/
Class	0.5/1.0	0.5/1.0	0.5/1.0	0.5/1.0	0.5/1.0
Turns Ratio	3000:1	10000:1	10000:1	10000:1	/
Protection Level	7.5V0-P	7.5V0-P	7.5V0-P	7.5V0-P	
Insulation Category	CAT III				
Operating Condition	-20°C ~ +50°C, ≤85% RH, No condensation, IN-house&Any direction installable				
Storage Condition	-30°C ~ +50°C, ≤85% RH, No condensation				

MODEL	KCT-36					
Current Ratio	200/5A(1A)	250/5A(1A)	300/5A(1A)	400/5A(1A)	500/5A(1A)	600/5A(1A)
Primary Current(A)	200A	250A	300A	400A	500A	600A
Max. Current(A)	240A	300A	360A	480A	600A	720A
Output	5A (1A)	5A (1A)	5A (1A)	5A (1A)	5A (1A)	5A (1A)
Burden(VA)	0.5 (1.5)	0.5 (1.5)	0.5 (1.5)	1.5 (2.5)	1.5 (2.5)	1.5 (2.5)
Class	3.0 (1.0)	1.0 (1.0)	1.0 (1)	1.0 (0.5)	1.0 (0.5)	1.0 (0.5)
Turns Ratio	40:1 (200:1)	50:1(250:1)	60:1(300:1)	80:1(400:1)	100:1(500:1)	120:1(600:1)
Protection Level	7.5V0-P					
Insulation Category	CAT III					
Operating Condition	-20°C ~ +50°C, ≤85% RH, No condensation, IN-house&Any direction installable					
Storage Condition	-30°C ~ +50°C, ≤85% RH, No condensation					

KCT Series

KCT-50



MODEL	KCT-50				
Current Ratio	600A/60mA	800A/50mA	1000A/50mA	800A/0.333V	1000A/3V
Primary Current(A)	600A	800A	1000A	800A	1000A
Max. Current(A)	720A	960A	1200A	960A	1200A
Secondary Current(mA)	60mA	50mA	50mA	333mA	3000mV
Load Resistance(Ω)	50 Ω	50 Ω	50 Ω	/	/
Class	0.5/1.0	0.5/1.0	0.5/1.0	0.5/1.0	0.5/1.0
Turns Ratio	10000:1	16000:1	20000:1	/	/
Protection Level	7.5V0-P	7.5V0-P	7.5V0-P		
Insulation Category	CAT III				
Operating Condition	-20°C ~ +50°C, \leq 85% RH, No condensation, IN-house&Any direction installable				
Storage Condition	-30°C ~ +50°C, \leq 85% RH, No condensation				

MODEL	KCT-50					
Current Ratio	500A/5A(1A)	600A/5A(1A)	750A/5A(1A)	800A/5A(1A)	1000A/5A(1A)	1200A/5A(1A)
Primary Current(A)	500A	600A	750A	800A	1000A	1000A
Max. Current(A)	600A	720A	900A	960A	1200A	1440A
Output	5A(1A)	5A(1A)	5A(1A)	5A(1A)	5A(1A)	5A(1A)
Burden(VA)	2.5	2.5	2.5	2.5	2.5	2.5
Class	0.5	0.5	0.5	0.5	0.5	0.5
Turns Ratio	100:1(500:1)	120:1(600:1)	150:1(750:1)	160:1(800:1)	200:1(1000:1)	240:1(1200:1)
Protection Level	7.5V0-P					
Insulation Category	CAT III					
Operating Condition	-20°C ~ +50°C, \leq 85% RH, No condensation, IN-house&Any direction installable					
Storage Condition	-30°C ~ +50°C, \leq 85% RH, No condensation					

Accuracy class characteristics:

